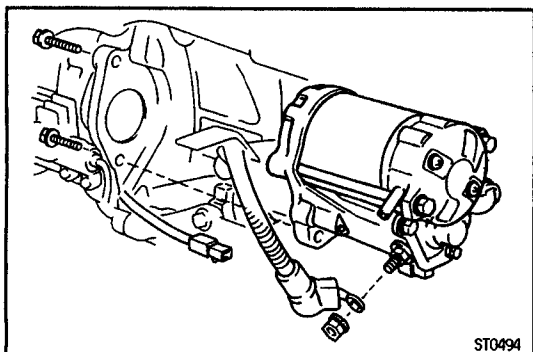


## STARTER INSTALLATION

### 1. INSTALL STARTER MOTOR

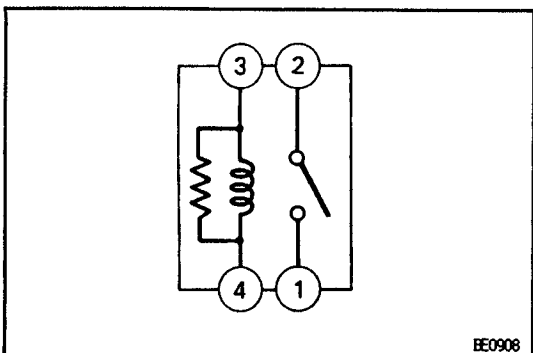
Place the starter motor in the flywheel bellhousing, and install and torque the starter mounting bolts.

**Torque: 39 N-m (400 kgf-cm, 29 ft-lbf)**



### 2. CONNECT 2 WIRES TO STARTER

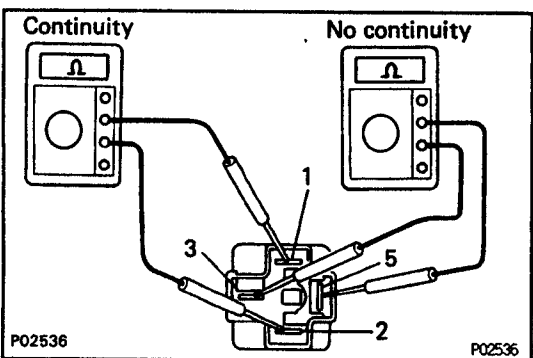
Connect the connector to the terminal on the magnetic switch. Connect the cable from the battery to the terminal on the switch, and install the nut.



## STARTER RELAY

### STARTER RELAY INSPECTION

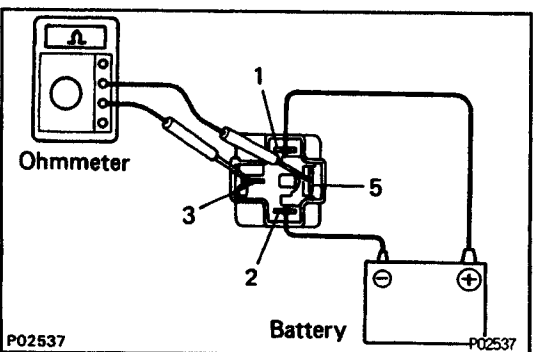
**LOCATION:** The relay is located in the No.1 junction block on the driver's side.



### 1. INSPECT RELAY CONTINUITY

- Using an ohmmeter, check that there is continuity between terminals 1 and 2.
- Check that there is no continuity between terminals 3 and 5.

If continuity is not as specified, replace the relay.



### 2. INSPECT RELAY OPERATION

- Apply battery voltage across terminals 1 and 2.
- Check that there is continuity between terminals 3 and 5.

If operation is not as described, replace the relay.