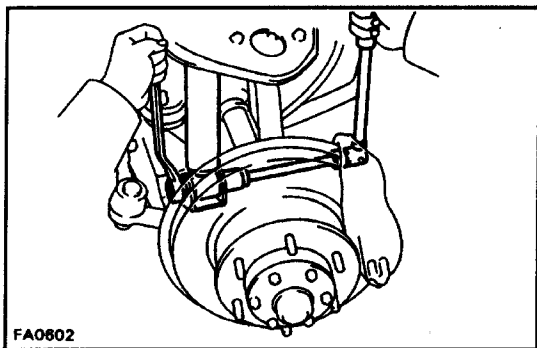
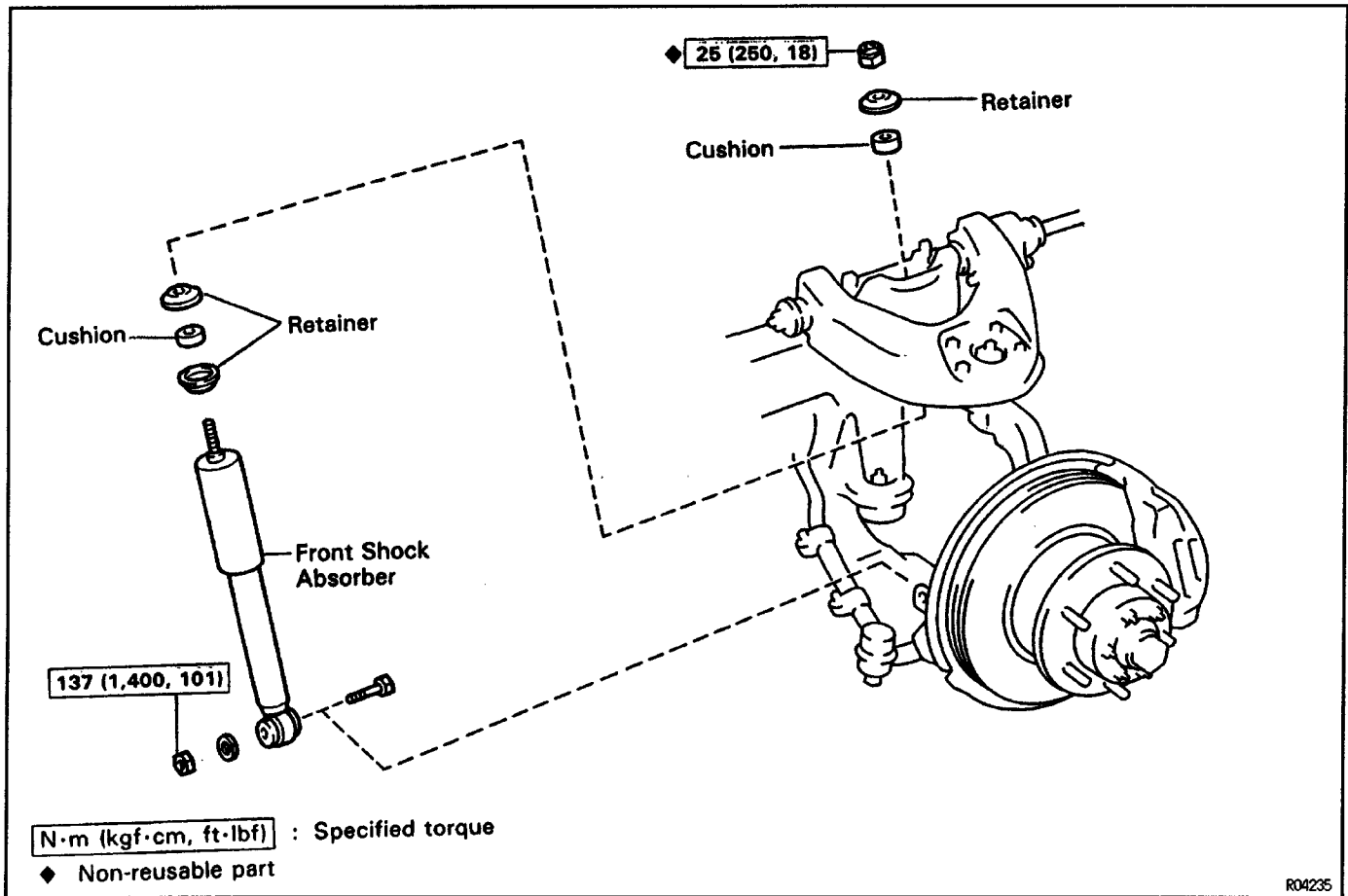


FRONT SHOCK ABSORBER COMPONENTS

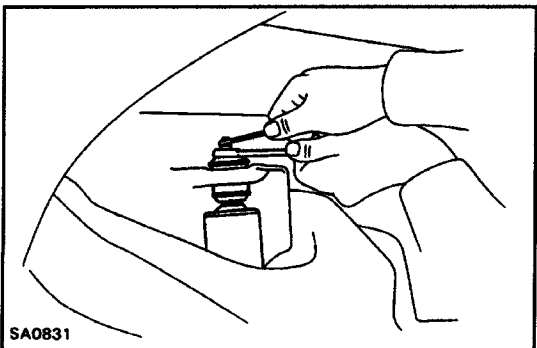


FRONT SHOCK ABSORBER REMOVAL

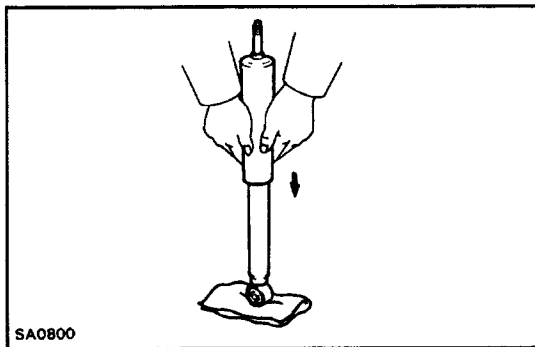
1. JACK UP VEHICLE AND REMOVE FRONT WHEEL

2. REMOVE FRONT SHOCK ABSORBER

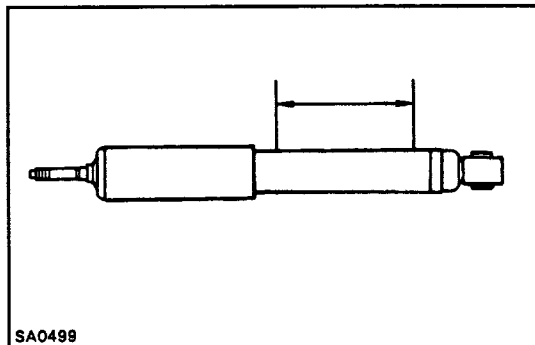
- (a) Remove the nut, washer and bolt, disconnect the shock absorber from the lower suspension arm bracket.



- (b) Remove the nut, cushion and retainer.
- (c) Disconnect the shock absorber from the frame.
- (d) Remove the retainers and cushion from the shock absorber.



SA0800



SA0499

FRONT SHOCK ABSORBER INSPECTION

1. INSPECT OPERATION OF FRONT SHOCK ABSORBER

- (a) While pushing the shock absorber, check that the pull throughout the stroke is even, and that there is no abnormal resistance or noise.

- (b) Gas Filled Type:

Fully push the shock absorber in and release it.

Check that it returns at a constant speed throughout.

HINT: If the shock absorber is the gas filled type, this information will be engraved on the exterior of the outer shell.

2. GAS FILLED TYPE:

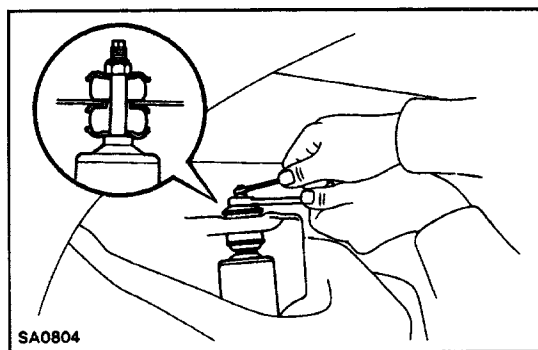
DISCARD FRONT SHOCK ABSORBER

Before discarding the shock absorber, drill a hole 2 – 3 mm (0.079 – 0.118 in.) in diameter at the location shown in the illustration to release the gas inside.

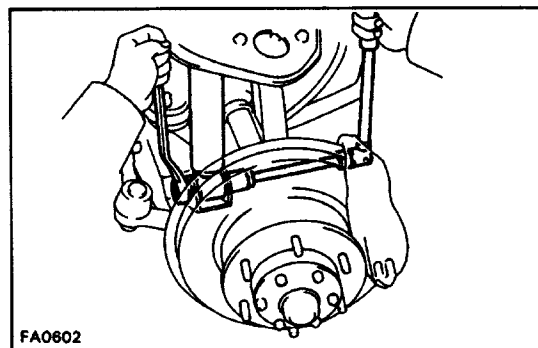
NOTICE:

When drilling, chips may fly out; work carefully.

The gas is colorless, odorless, and non-poisonous.



SA0804



FA0602

FRONT SHOCK ABSORBER INSTALLATION

1. INSTALL FRONT SHOCK ABSORBER

- (a) Install the retainers and cushion from the shock absorber.
- (b) Install the shock absorber to the frame with the cushion and retainer, as shown in the illustration.
- (c) Install and torque a new nut.

Torque: 25 N-m (250 kgf-cm 18 ft-lbf)

- (d) Install the bolt, washer and nut, connect the shock absorber to the lower suspension arm bracket.

Torque: 137 N-m (1,400 kgf-cm, 101 ft-lbf)

2. INSTALL FRONT WHEEL AND LOWER VEHICLE

Torque: 103 N-m (1,050 kgf-cm, 76 ft-lbf)