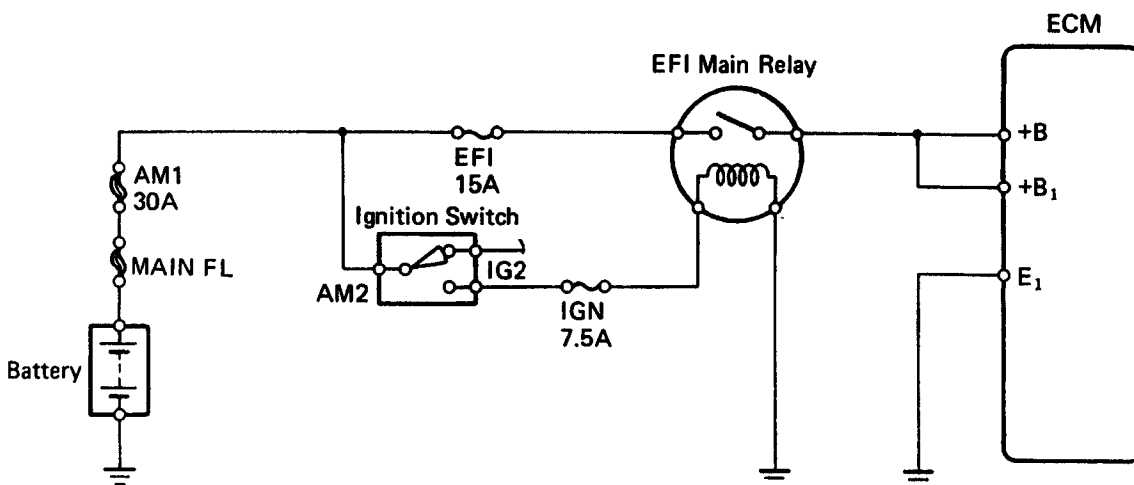
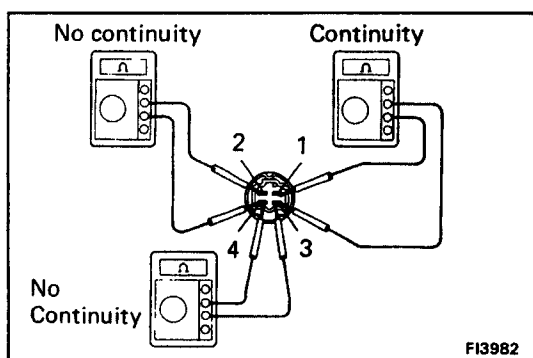


EFI MAIN RELAY

EG1YM-01



FI3982



FI3982

EFI MAIN RELAY INSPECTION

1. INSPECT RELAY CONTINUITY

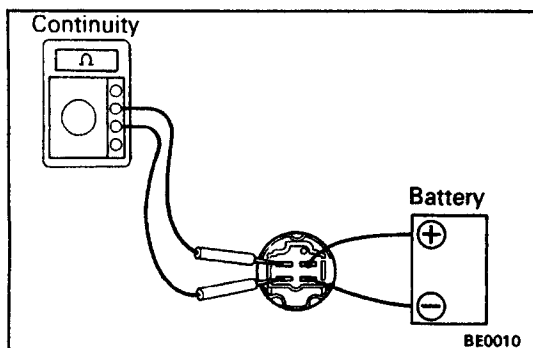
- Using an ohmmeter, check that there is continuity between terminals 1 and 3.
- Check that there is no continuity between terminals 2 and 4.
- Check that there is no continuity between terminals 3 and 4.

If operation is not as specified, replace the relay.

2. INSPECT RELAY OPERATION

- Apply battery voltage across terminals 1 and 3.
- Using an ohmmeter, check that there is continuity between terminals 2 and 4.

If operation is not as specified, replace the relay.



BE0010